

SmartSESAME®  
**M's eye** [エムズアイ] Consolidated log management platform

Much of information leakage occurs via paper mediums. The SmartSESAME M's eye supports multiple manufacturers and allows you to collect job logs (such as print, copy, fax, scan, and other logs) from MFPs, and collectively manage them. With its traceability, tracking when and which MFP performed what types of jobs by whom, M's eye can deter illegal use of MFPs and control the risk of information leakage, resulting in security enhancement.

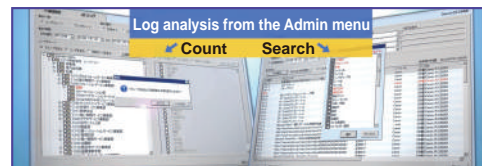
**O**utstanding log collection

- Fully collects job logs, such as print, copy, scan, and fax logs of MFPs
- Multiple manufacturers are supported (Standard equipment of six manufacturers are supported)



**V**arious log management screens and analysis functions

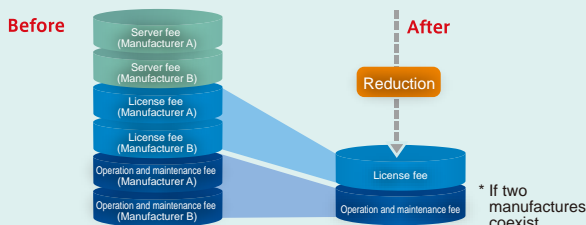
- Manage the use status in a list by group, user, or model
- Easy-to-understand reports that include count and analysis results in tables and graphs are automatically created



- When
- Who (which department)
- Which model
- What
- In which printing method

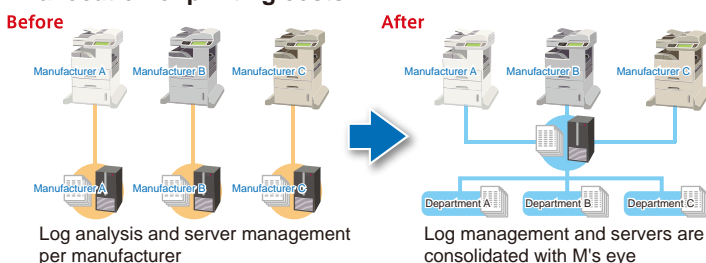
**H**igh cost performance

- A log server specific to a manufacturer is not required
- Only basic usage charges are required for operating the service from the following year

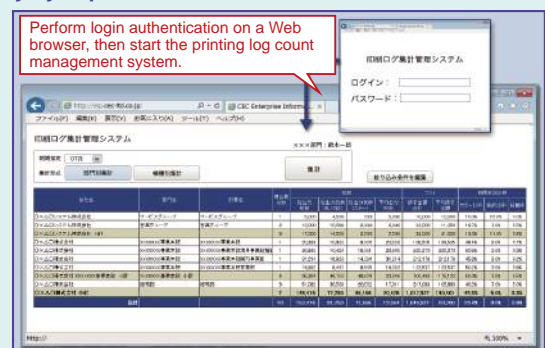


**T**aking the load off administrators

- Log formats that vary depending on manufacturers can be unified under a single format and managed
- The printing status (such as the number of printouts and color) per department can be tracked, allowing easy allocation of printing costs



Monthly by department



Count by model

Count and monthly changes per model can be output.

Yearly count changes by department

Monthly count by user

Count and monthly changes per model can be output.

\* The screens are sample images of forms.



## Problems with log management

Management costs

### Management costs increase

Log obtainment methods and log formats (the output order of log information and logs) vary depending on manufacturers, taking **significant time to count and analyze logs**, and **allocate costs to departments**.

Log server

### Log servers continue to increase

A log management server may be required per manufacturer. The more models of various manufactures are used, **the more servers are required**, incurring management and maintenance costs. If MFPs are consolidated under a single manufacturer, it is hard to replace them with models of other manufacturers.

Security

### Security risk

Conventional print log systems that support multiple vendors use print command logs, which regard print jobs as being complete when the print data is sent. For this reason, users cannot tell whether **the jobs have been printed or not**.



## Benefits from M's eye consolidated log

### Management costs are reduced

Log formats that vary depending on manufacturers are unified under a single format, allowing users to **collectively** count and analyze logs, and **allocate costs to departments**.

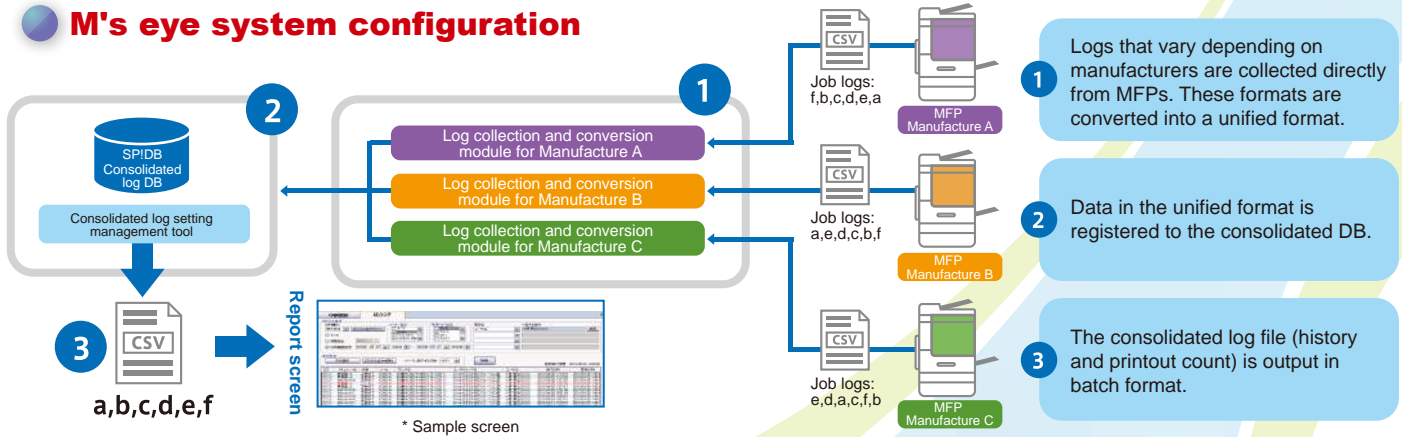
### Log servers are consolidated

There is no need to have a log management server per manufacturer, allowing the **consolidation of the servers**. Even if MFPs of different manufacturers are introduced, burdens of system management do not increase.

### Security

Job logs that are accumulated in MFPs, excluding print command logs, are directly obtained, allowing for management of **accurate logs** regarding whether jobs are printed or not, and when and which functions are used.

## M's eye system configuration



## Major history log items that are output from MFPs

No.	Items	Notes	No.	Items	Notes
1	Document name	Document name	14	Number of copies	
2	Group name	The name of a group to which a user who prints belongs	15	Log type	Print/Copy/Box/Reception/Fax transmission/Scan, etc.
3	User name		16	Number of A3 pages	Color/Black and white, each
4	Printer name		17	Number of A4 pages	Color/Black and white, each
5	Reception time	Time when a job starts	18	Number of B4 pages	Color/Black and white, each
6	Update time	Time when a job ends	19	Number of B5 pages	Color/Black and white, each
7	Paper size		20	Number of pages of other sizes	Color/Black and white, each
8	Color/Black and white		21	Error cause	Text string/code when an error occurs
9	1-sided/2-sided		22	Destination address	Fax number, mail address, save destination path, etc.
10	Page layout	One segment, Two segments, etc.	23	Destination name	Destination name for fax or other transmission
11	Bind direction	Long edge bind, short edge bind, etc.	24	Sender's address	Fax number, mail address
12	Toner saver	Yes, No	25	Sender's name	Sender's name for fax or other transmission
13	Total number of pages	Number of pages printed	26	Others	Area recorded by an individual manufacturer

\* Some MFP models or manufactures require options. For details about supported models, contact us.

## Major count log items that are output from MFPs

No.	Items	Notes
1	Group name	The name of a group to which a user who prints belongs (printer)
2	User name (printer name)	
3	Total number of pages	Number of pages printed
4	Log type	Print/Copy/Box/Reception/Fax transmission/Scan, etc.
5	Number of A3 pages	Color/Black and white, each
6	Number of A4 pages	Color/Black and white, each
7	Number of B4 pages	Color/Black and white, each
8	Number of B5 pages	Color/Black and white, each
9	Number of pages of other sizes	Color/Black and white, each

\* Other log items can be collected. For details, contact us.

Inquiries

**CEC** 株式会社シーイーシー  
Computer Engineering & Consulting

JR Ebisu Bldg., 5-5, Ebisu Minami 1-chome, Shibuya-ku, Tokyo 150-0022  
TEL:03-5789-2442 FAX:03-5789-2686  
E-mail: marketing@cec-ltd.co.jp  
URL: http://www.cec-ltd.co.jp

SmartSESAME Search

Sales representative